



FOCUSED GENERAL PLAN UPDATE

Public Workshop – Public Review
Draft Elements
July 16, 2024

GENERAL PLAN UPDATE

- The City is updating the General Plan to reflect new legislative requirements
- The update will make focused changes to the **Health and Safety** element and add a new **Environmental Justice** element. No land use changes are identified.

Health and Safety

Additional information and mapping related to fire risk, flooding, and climate resilience are required.

Environmental Justice

The Planning for Healthy Communities Act requires jurisdictions meeting certain criteria to adopt an Environmental Justice element addressing unique health risks to the community.

PROCESS





HEALTH AND SAFETY

Change Summary

ISSUES ANALYSIS

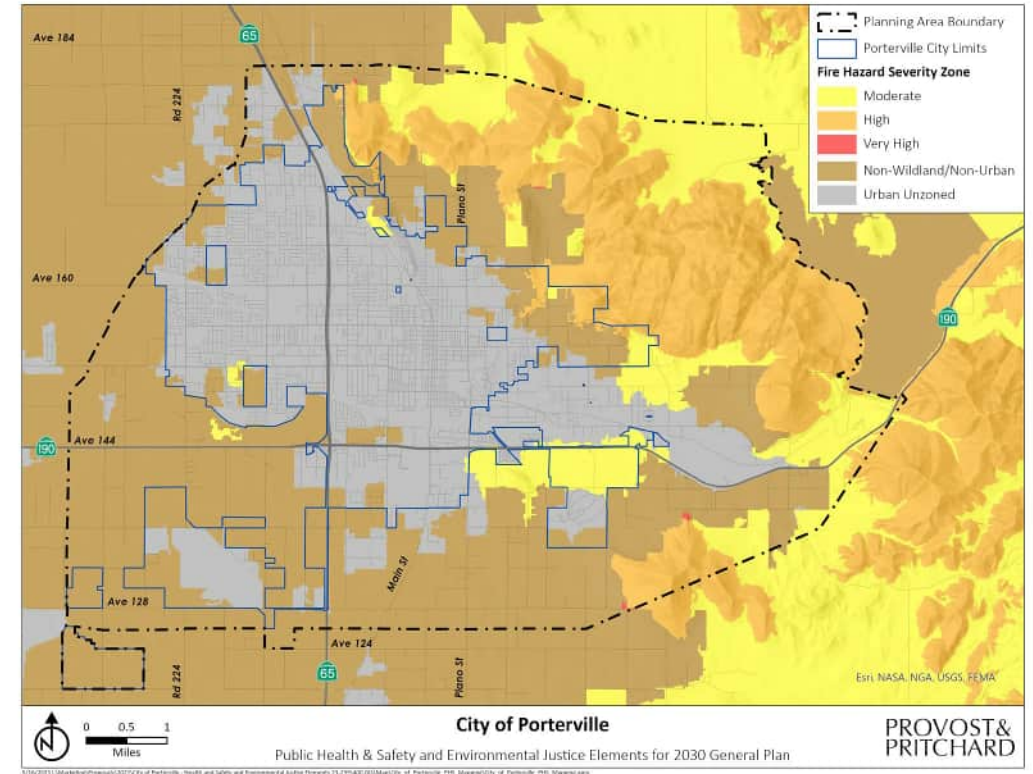
- Climate adaptation – SB 379
- Wildfire risk – SB 1241
- Flood risk – SB 5
- Military readiness – SB 1458 & SB 1462

CLIMATE ADAPTATION

- Incorporated Tulare County Local Hazard Mitigation Plan into General Plan as an attachment
 - Implement programs and policies identified in the LHMP
- No additional policies added to the General Plan, covered by existing and LHMP policies

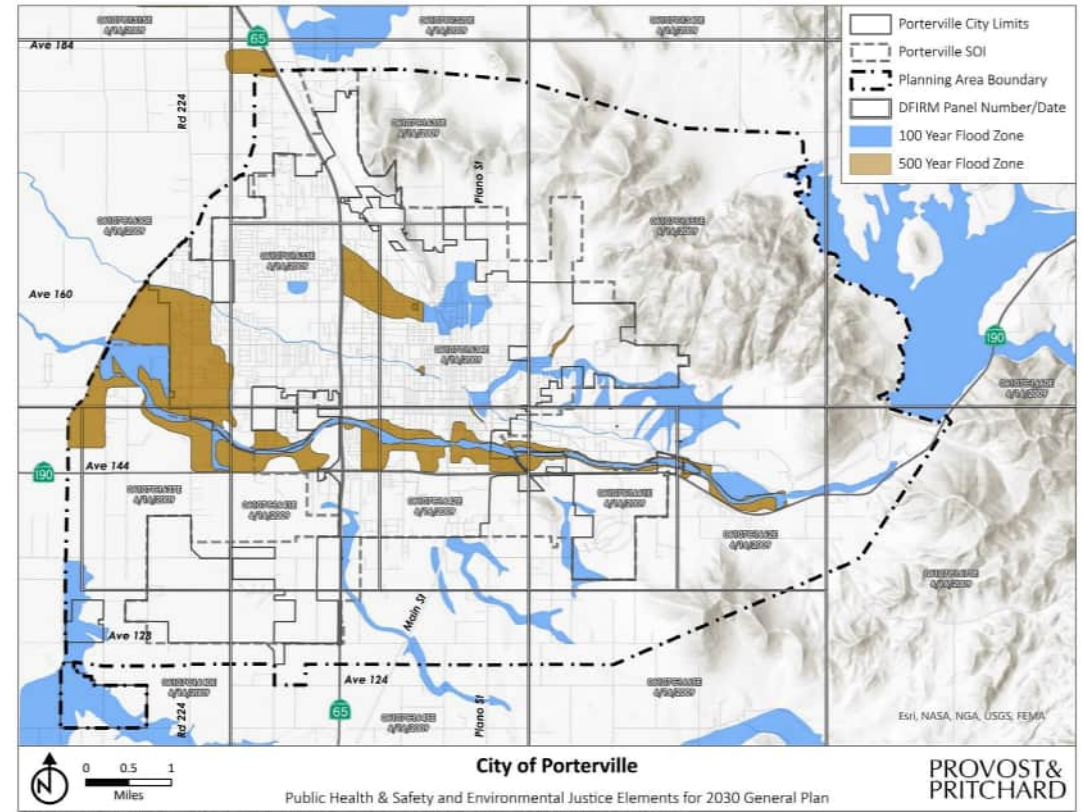
WILDFIRE RISK

- Added updated information about fire hazard zones in Porterville
- Provided additional mapping demonstrating Very High Fire Hazard Severity Zones in Porterville
- No additional policies, existing policies adequately address wildfire risk



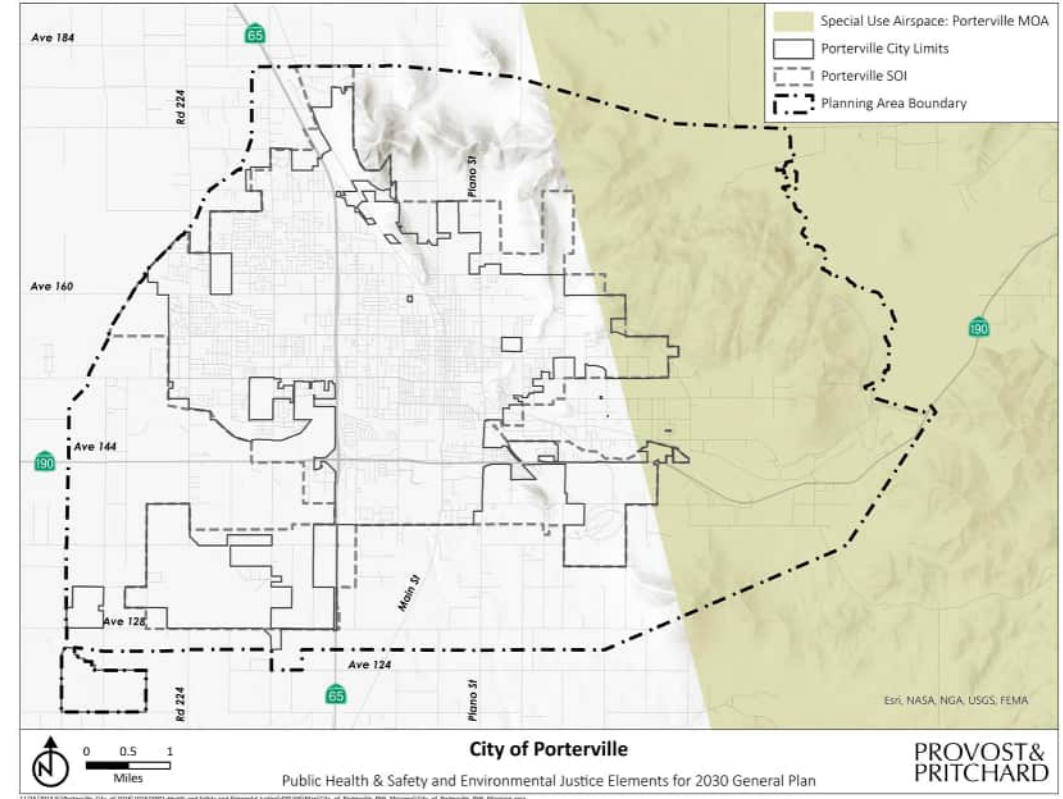
FLOOD RISK

- Added updated information about flood zones in Porterville
- No additional policies, existing policies adequately address flood risk



MILITARY READINESS

- Notification is only required when within 1,000 feet of a military installation
- The Porterville Planning Area is included in a special use airspace but is not within 1,000 feet of a facility
- No additional policies





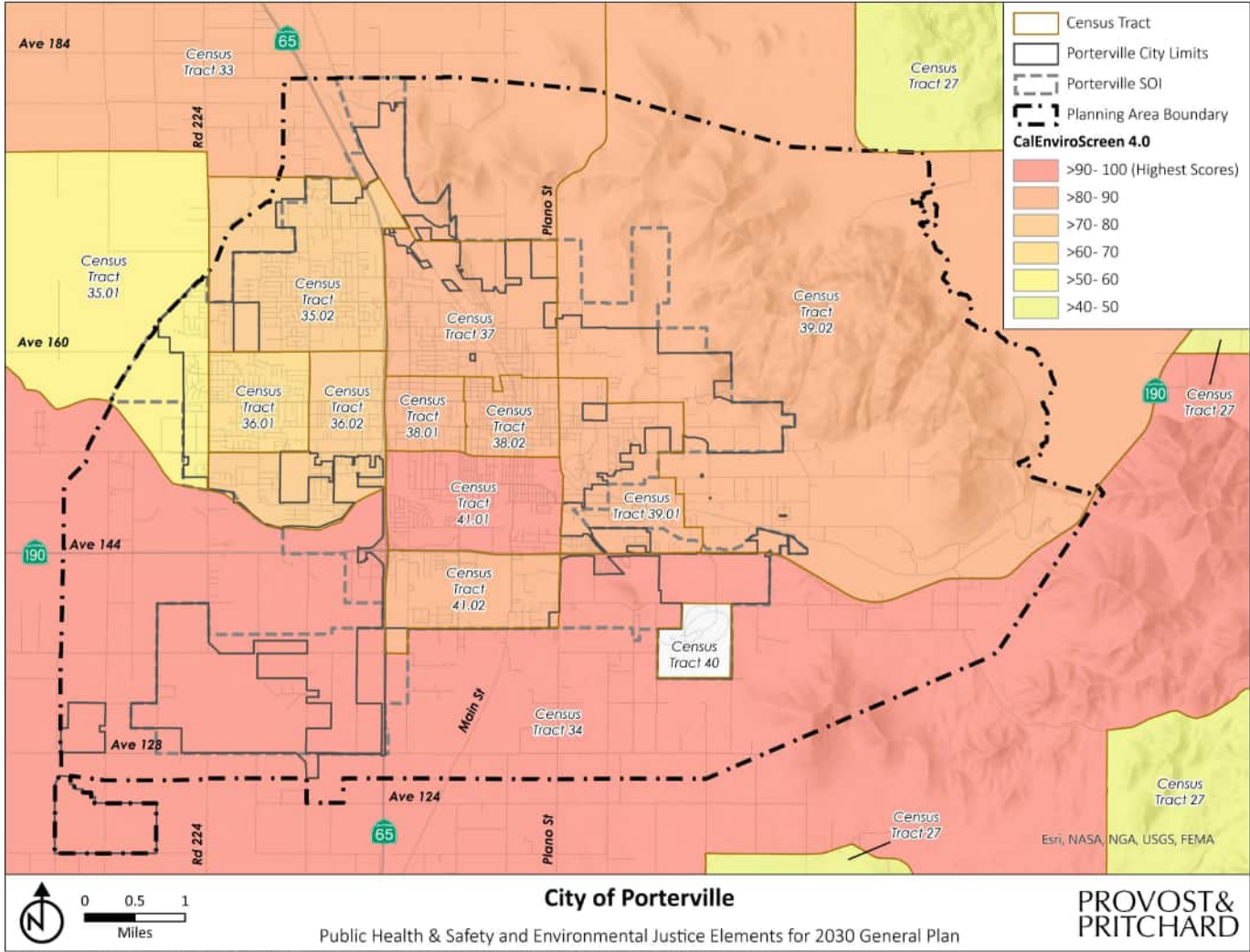
ENVIRONMENTAL JUSTICE

Element Summary

ENVIRONMENTAL JUSTICE

- EJ is the idea that certain communities face a disproportionate burden of environmental health hazards
- SB 1000 requires communities that meet certain thresholds to consider EJ in their General Plan
- Porterville is considered a disadvantaged community based on CalEnviroScreen 4.0 mapping

CALENVIROSCREEN



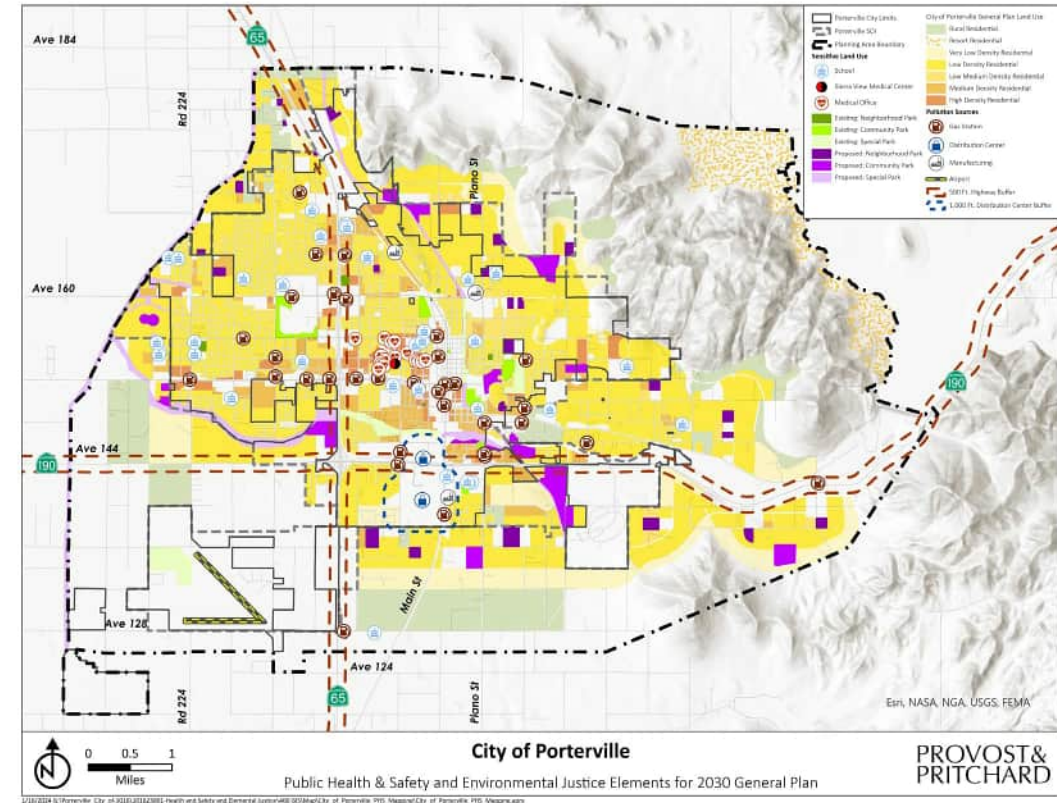
9/12/2023 (\\spring.com\geodatal\jbs\Marketing\Proposals\2023\City of Porterville - Health and Safety and Environmental Justice Elements 28-259\000 001\Map\City_of_Porterville_PHS_Mapping\City_of_Porterville_PHS_Mapping.apx)

ENVIRONMENTAL JUSTICE

- Environmental Justice Policy Review analyzed potential EJ concerns in Porterville, including
 - Pollution exposure
 - Public facilities access
 - Food access
 - Safe and sanitary homes
 - Physical activity
 - Civic engagement
- The Policy Review is included in the General Plan as an attachment

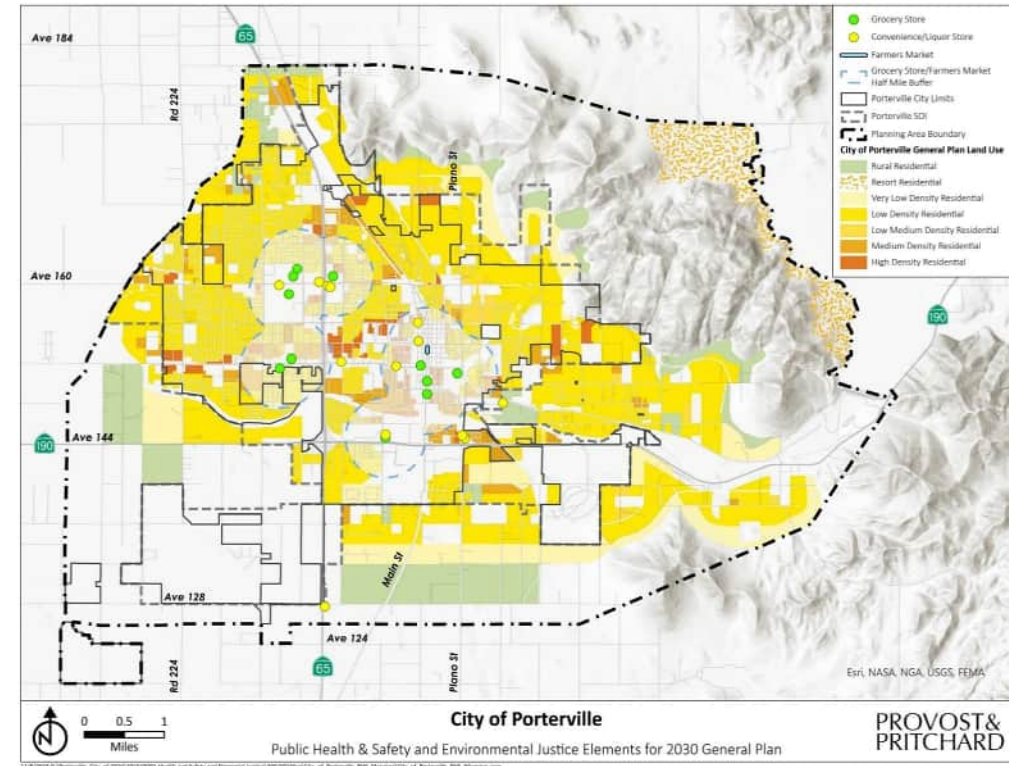
POLLUTION EXPOSURE

- Guiding Policy EJ-G-1: Impacts from pollution are minimized through thoughtful and deliberate land use planning.
- Implementing Policies:
 - Utilize California Air Resources Board's siting recommendations
 - Coordinate with Eastern Tule Groundwater Sustainability Agency
 - Consult EnviroStor database during land use decisions



FOOD ACCESS

- Guiding Policy EJ-G-2: All members of the community have access to affordable and nutritious food
- Implementing Policies
 - Prioritize healthy food outlets in economic development
 - Consider proximity to unhealthy food sources during development proposals



SAFE AND SANITARY HOMES

- Guiding Policy: Guided by the goals of the Housing Element
- Implementing Policies:
 - Increase awareness of warning signs of toxic substances
 - Increase awareness of affordable housing programs
 - Sponsor and support cooling centers

PUBLIC FACILITIES ACCESS

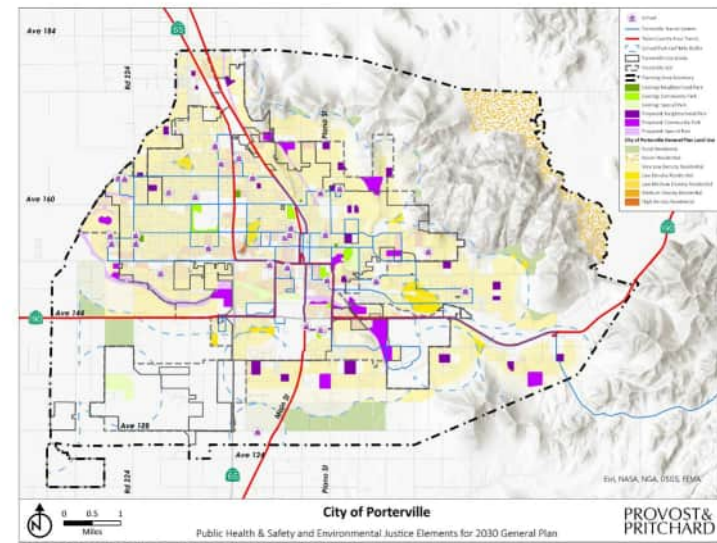
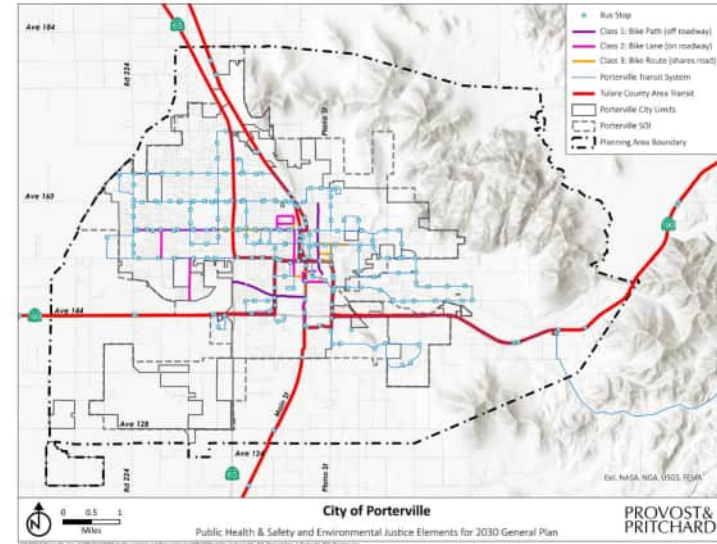
- Guiding Policy EJ-G-4: Community facilities (including parks and community centers), public facilities (including utilities and transportation infrastructure), and healthcare facilities are equally distributed throughout the community.
- Implementing Policies:
 - Ensure equitable location of public facilities
 - Monitor public facilities and service provision for capacity
 - Monitor and plan for development and maintenance through the Capital Improvement Plan

	Distribution	Access	Conditions	Operational Sustainability	Future Capacity	Recommendation
Public Improvements						
Water Distribution	Equitable	Equitable	Good	Good	Good	No action needed
Wastewater Treatment	Equitable	Equitable	Good	Good	Adequate	Ensure capacity expansion of wastewater treatment facilities occurs in line with timeline from development
Flood Control & Drainage	Equitable	Equitable	Good	Good	Good	Monitor development and ensure new stormwater retention basins are established as necessary
Solid Waste	Equitable	Equitable	Good	Good	Adequate	No additional action needed
Streets & Roads	Equitable	Equitable	Adequate	Good	Good	No additional action needed
Public Utilities	Equitable	Equitable	Good	Good	Good	No additional action needed
Public Services						
Transit	Equitable	Equitable	Good	Good	Good	Monitor development and consider route expansion when use-potential warrants it
Healthcare	Equitable	Equitable	Good	Good	Good	No additional action needed
Emergency Services	Equitable	Equitable	Good	Good	Good	No additional action needed
Community Facilities						
Government Buildings	Equitable	Equitable	Good	Good	Good	No additional action needed
Daycare Centers	Equitable	Equitable	Good	n/a*	n/a*	No additional action needed
Libraries	Equitable	Equitable	Good	Good	Good	No additional action needed

* The City is not responsible for the operation or maintenance of private facilities.

PHYSICAL ACTIVITY

- Guiding Policy EJ-G-5: Opportunities for physical activity, such as walking and biking, are integrated into the built environment.
- Implementing Policies:
 - Link residences with destinations through an active transportation network
 - Conduct a visual assessment of bicycle and pedestrian facilities
 - Complete an active transportation plan
 - Require street trees or shade coverage



CIVIC ENGAGEMENT

- Guiding Policy: All members of the community are afforded meaningful opportunities to engage in local decision making.
- Implementing Policies:
 - Ensure language accessibility for public meetings
 - Provide remote access options and alternative participation opportunities
 - Evaluate meeting times and locations

ANY QUESTIONS?

Public Review Period

- Visit the project website to access public review documents
- Send comments to the City by August 26th
 - Email comments to Claudia Calderon at ccalderon@ci.porterville.ca.us or call 559-782-7460

Project website: porterville2030gp.com

