



FOCUSED GENERAL PLAN UPDATE

Public Workshop – Policy Review
February 6, 2024

GENERAL PLAN UPDATE

- The City is updating the General Plan to reflect new legislative requirements
- The update will make focused changes to the **Health and Safety** element and add a new **Environmental Justice** element. No land use changes are anticipated.

Health and Safety

Additional information and policies related to fire risk, flooding, and climate resilience are required.

Environmental Justice

The Planning for Healthy Communities Act requires jurisdictions meeting certain criteria to adopt an Environmental Justice element addressing unique health risks to the community.

PROCESS

PROJECT MILESTONES





HEALTH AND SAFETY

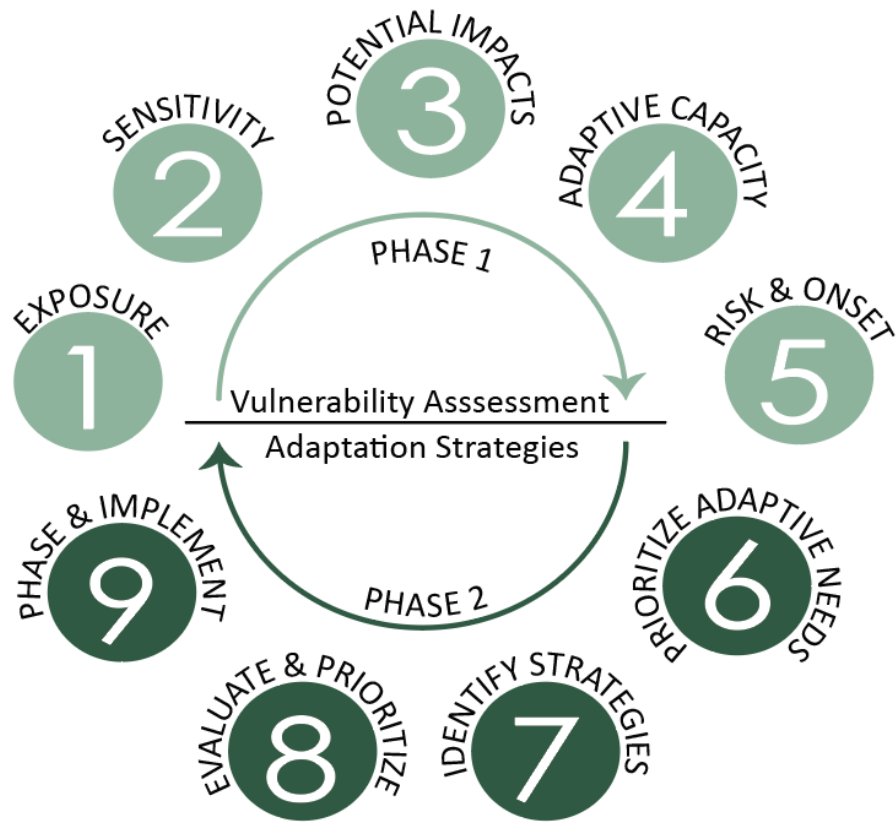
Summary and Recommendations

ISSUES ANALYSIS

- Climate adaptation
- Wildfire risk
- Flood risk
- Military readiness

SUMMARY AND RECOMMENDATIONS

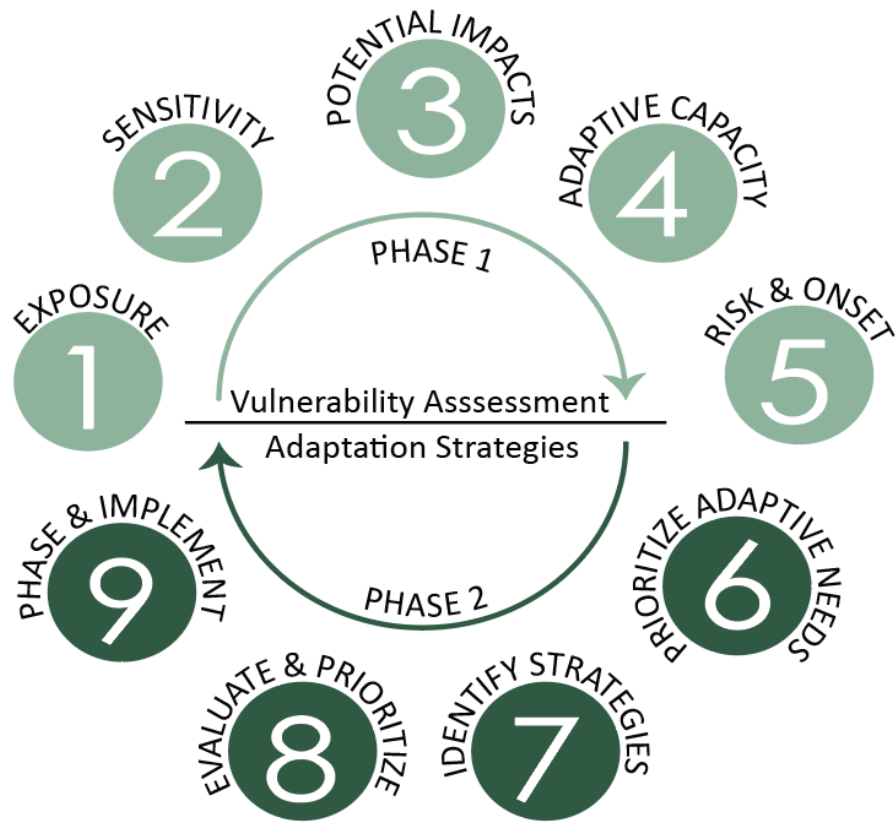
SB 379 – Climate Adaptation



City of Porterville Hazard Summary					
Hazard	Frequency ¹	Extent ²	Magnitude ³	Significance	Location
Climate Change	Highly	Extensive	Catastrophic	High	Entire City
Dam Failure	Unlikely	Extensive	Catastrophic	High	Portions
Drought	Likely	Extensive	Catastrophic	High	Entire City
Earthquake: Shaking	Occasional	Extensive	Limited	Low	Entire City
Energy Emergency ⁴	Occasional	Extensive	Critical	Medium	Entire City
Extreme Heat	Highly	Extensive	Critical	High	Entire City
Fire ⁵	Unlikely	Limited	Limited	Low	Entire City
Floods	Highly	Extensive	Critical	High	Portions
Fog	Likely	Extensive	Limited	Low	Entire City
Hazardous Materials	Likely	Limited	Limited	Low	Entire City
Landslide, Mudslide, and Debris	Unlikely	Limited	Negligible	Low	Entire City
Pandemic	Likely	Extensive	Critical	Medium	Entire City
Severe Storms and Wind	Highly Likely	Significant	Limited	Medium	Entire City
Wildfire ⁵	Unlikely	Limited	Limited	Low	Portions

SUMMARY AND RECOMMENDATIONS

SB 379 – Climate Adaptation



City of Porterville Hazard Summary					
Hazard	Frequency ¹	Extent ²	Magnitude ³	Significance	Location
Climate Change	Highly	Extensive	Catastrophic	High	Entire City
Dam Failure	Unlikely	Extensive	Catastrophic	High	Portions
Drought	Likely	Extensive	Catastrophic	High	Entire City
Earthquake: Shaking	Occasional	Extensive	Limited	Low	Entire City
Energy Emergency ⁴	Occasional	Extensive	Critical	Medium	Entire City
Extreme Heat	Highly	Extensive	Critical	High	Entire City
Fire ⁵	Unlikely	Limited	Limited	Low	Entire City
Floods	Highly	Extensive	Critical	High	Portions
Fog	Likely	Extensive	Limited	Low	Entire City
Hazardous Materials	Likely	Limited	Limited	Low	Entire City
Landslide, Mudslide, and Debris	Unlikely	Limited	Negligible	Low	Entire City
Pandemic	Likely	Extensive	Critical	Medium	Entire City
Severe Storms and Wind	Highly Likely	Significant	Limited	Medium	Entire City
Wildfire ⁵	Unlikely	Limited	Limited	Low	Portions

SUMMARY AND RECOMMENDATIONS

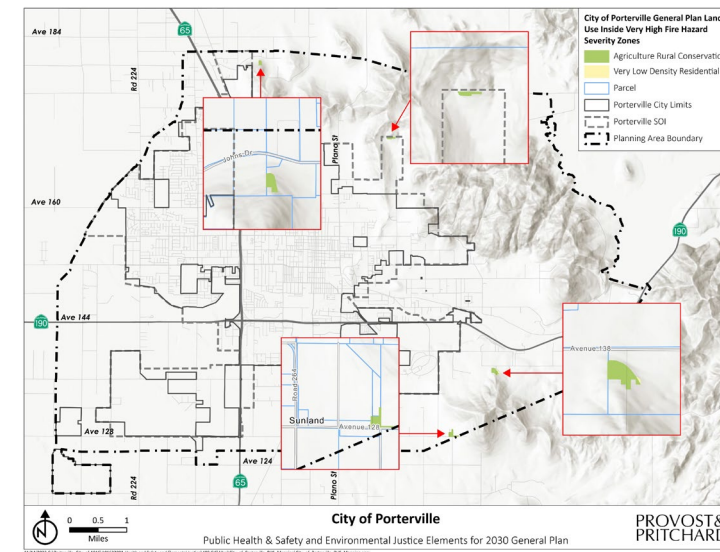
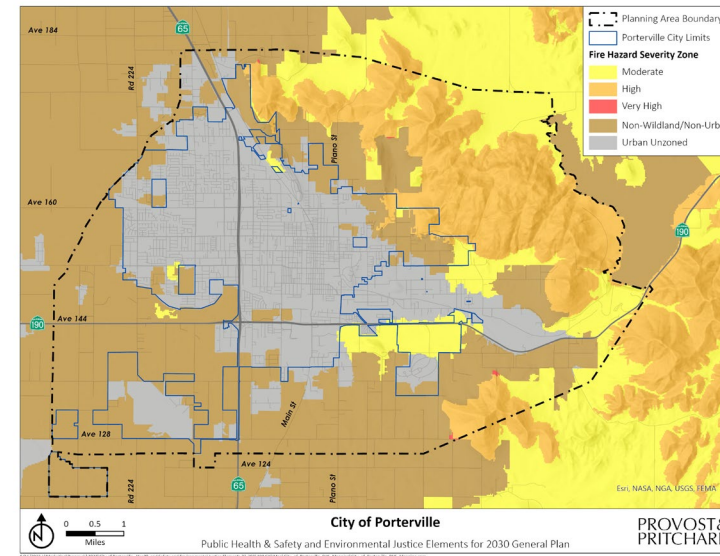
SB 379 – Climate Adaptation

- Incorporate 2023 Tulare County Multi-Jurisdictional LHMP into the General Plan by reference

SUMMARY AND RECOMMENDATIONS

SB 1241 – Wildfire Risk

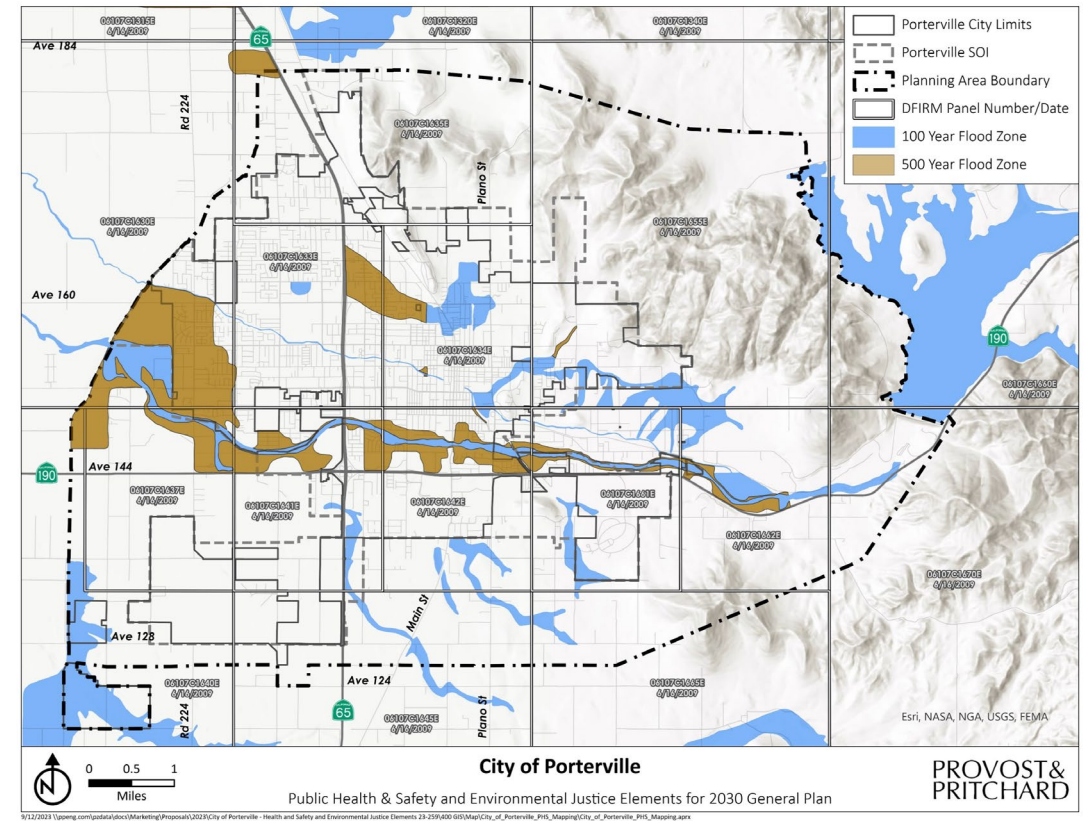
- Very little of the Porterville Planning Area is considered in the Very High Fire Hazard Severity Zone
- Current General Plan policies adequately address fire risk in these areas and in the City as a whole



SUMMARY AND RECOMMENDATIONS

SB 5 – Flood Risk

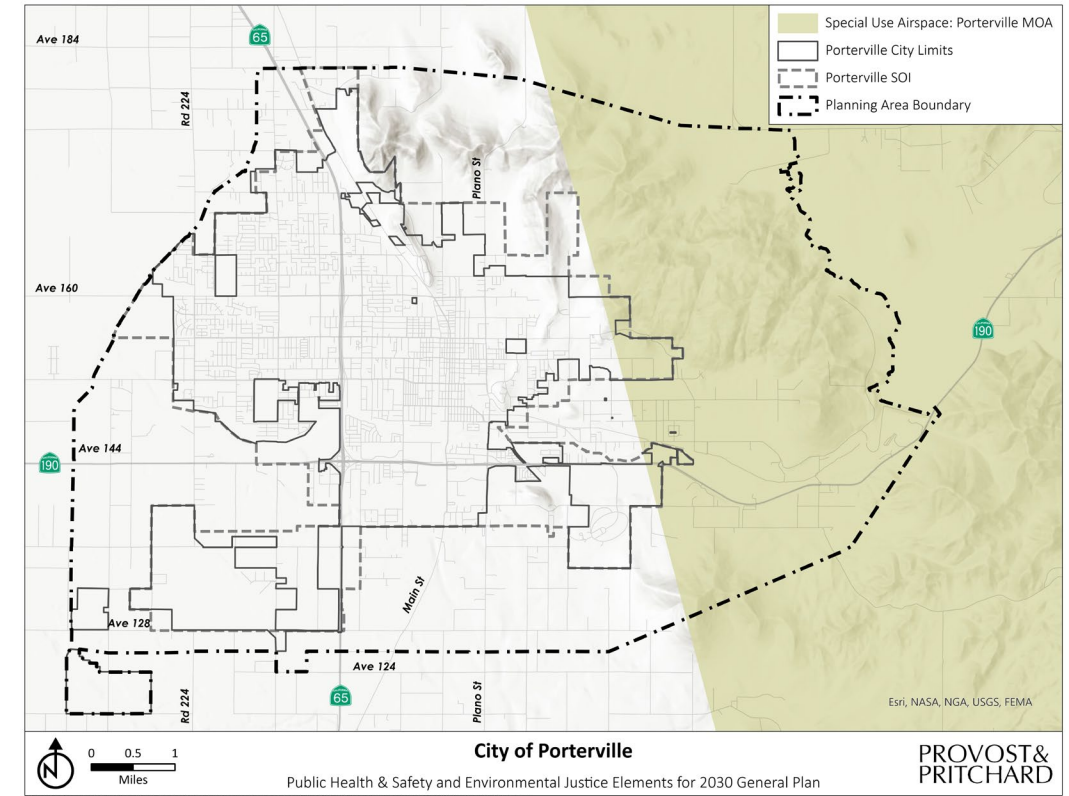
- There are no 200-year flood zones in the Porterville Planning Area
- Current General Plan policies adequately address flood risk in the City



SUMMARY AND RECOMMENDATIONS

SB 1458 & SB 1462 – Military Readiness

- A portion of the Porterville Planning Area is within a Special Use Military Airspace
- The proposed General Plan updates will be shared with the relevant military parties during the public review period



The background image shows the exterior of a building with classical architectural features, including columns and a decorative frieze. The words 'STATES OFFICE' are visible in large, raised letters above a set of windows. A semi-transparent white rectangular box is overlaid on the center of the image, containing the main title and subtitle. The sky is clear and blue, and a palm tree is visible in the upper right corner.

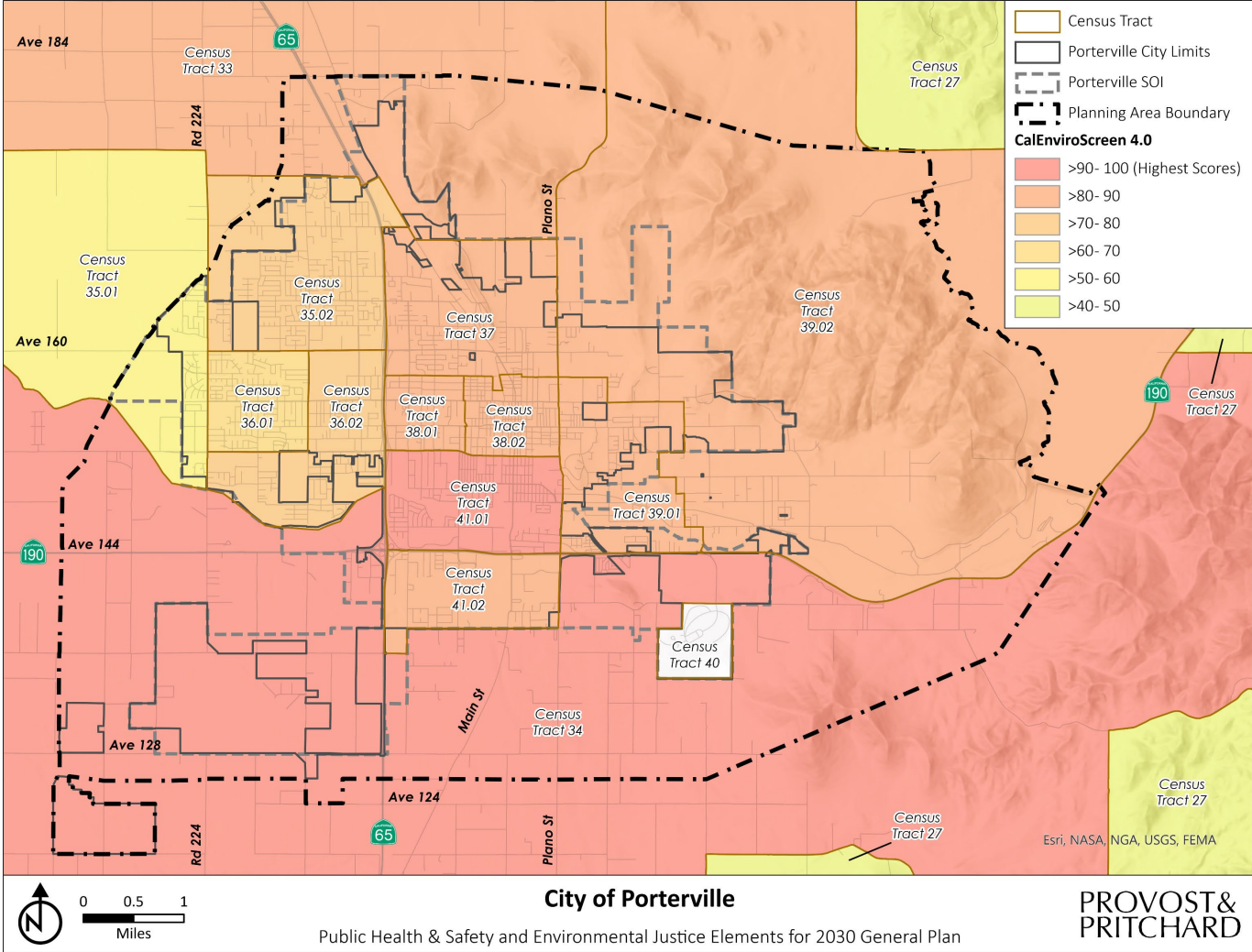
ENVIRONMENTAL JUSTICE

Summary and Recommendations

ENVIRONMENTAL JUSTICE

- EJ is the idea that certain communities face a disproportionate burden of environmental health hazards
- SB 1000 requires communities that meet certain thresholds to consider EJ in their General Plan
- Porterville is considered a disadvantaged community based on CalEnviroScreen 4.0 mapping

CALENVIROSCREEN



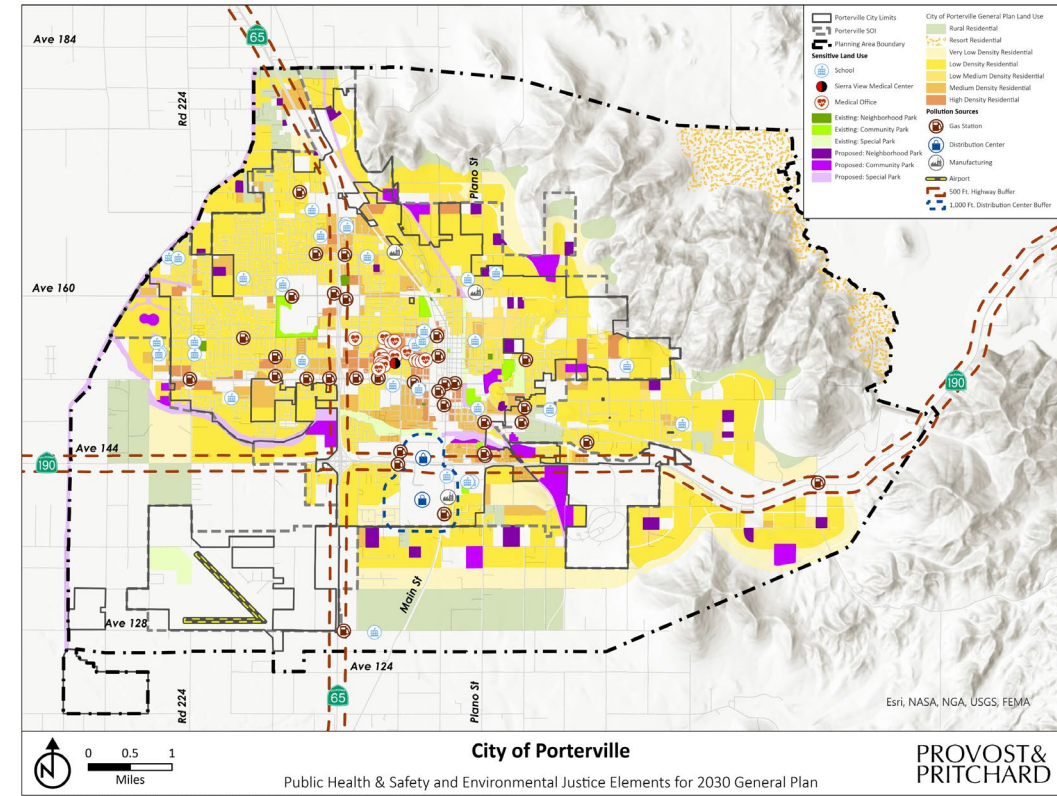
ISSUES ANALYSIS

- Pollution exposure
- Public facilities access
- Food access
- Safe and sanitary homes
- Physical activity
- Civic engagement

SUMMARY AND RECOMMENDATIONS

Pollution Exposure

- Utilize California Air Resources Board Air Quality and Land Use Handbook recommendations when approving new land uses that may be sensitive to or contribute to air pollution



SUMMARY AND RECOMMENDATIONS

Public Facilities Access

- Wastewater treatment
- Flood control and drainage
- Transit access

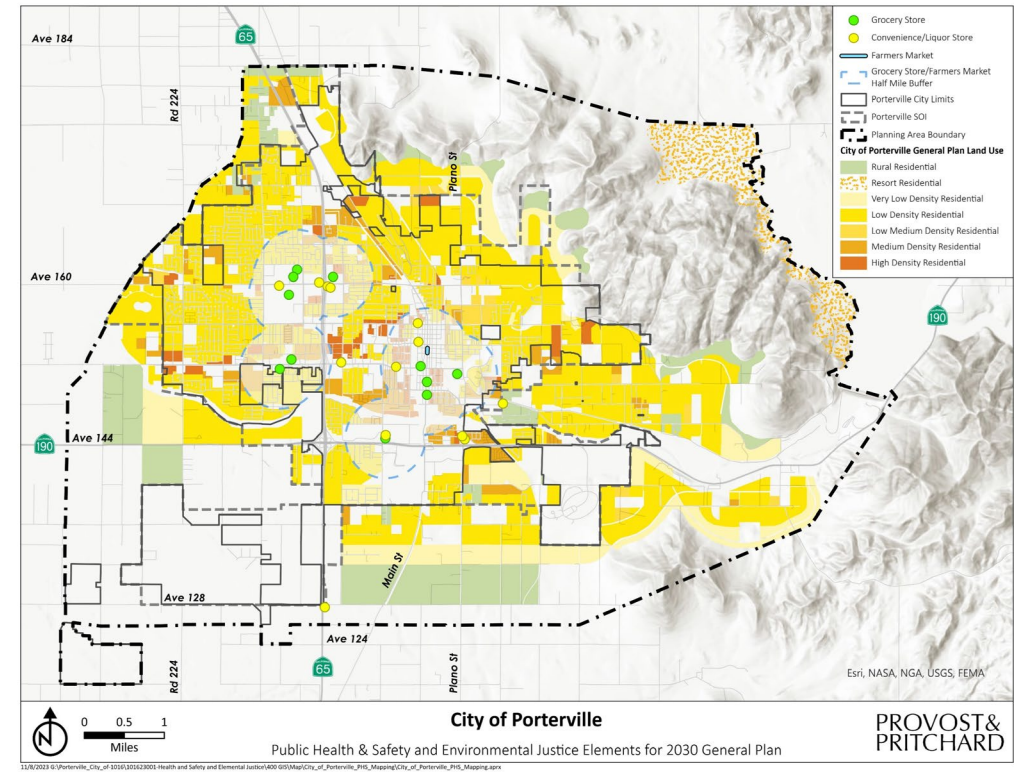
	Distribution	Access	Conditions	Operational Sustainability	Future Capacity	Recommendation
Public Improvements						
Water Distribution	Equitable	Equitable	Good	Good	Good	No action needed
Wastewater Treatment	Equitable	Equitable	Good	Good	Adequate	Ensure capacity expansion of wastewater treatment facilities occurs in line with timeline from development
Flood Control & Drainage	Equitable	Equitable	Good	Good	Good	Monitor development and ensure new stormwater retention basins are established as necessary
Solid Waste	Equitable	Equitable	Good	Good	Adequate	No additional action needed
Streets & Roads	Equitable	Equitable	Adequate	Good	Good	No additional action needed
Public Utilities	Equitable	Equitable	Good	Good	Good	No additional action needed
Public Services						
Transit	Equitable	Equitable	Good	Good	Good	Monitor development and consider route expansion when use-potential warrants it
Healthcare	Equitable	Equitable	Good	Good	Good	No additional action needed
Emergency Services	Equitable	Equitable	Good	Good	Good	No additional action needed
Community Facilities						
Government Buildings	Equitable	Equitable	Good	Good	Good	No additional action needed
Daycare Centers	Equitable	Equitable	Good	n/a*	n/a*	No additional action needed
Libraries	Equitable	Equitable	Good	Good	Good	No additional action needed

* The City is not responsible for the operation or maintenance of private facilities.

SUMMARY AND RECOMMENDATIONS

Food Access

- Access to healthy food is not a concern for Porterville given the current distribution of healthy food sources, high prevalence of personal vehicles in the City, and robust public transit system



SUMMARY AND RECOMMENDATIONS

Safe and Sanitary Homes

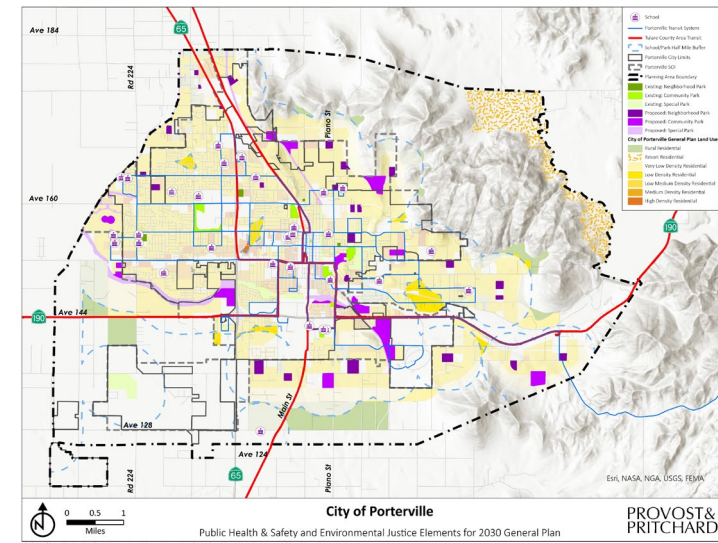
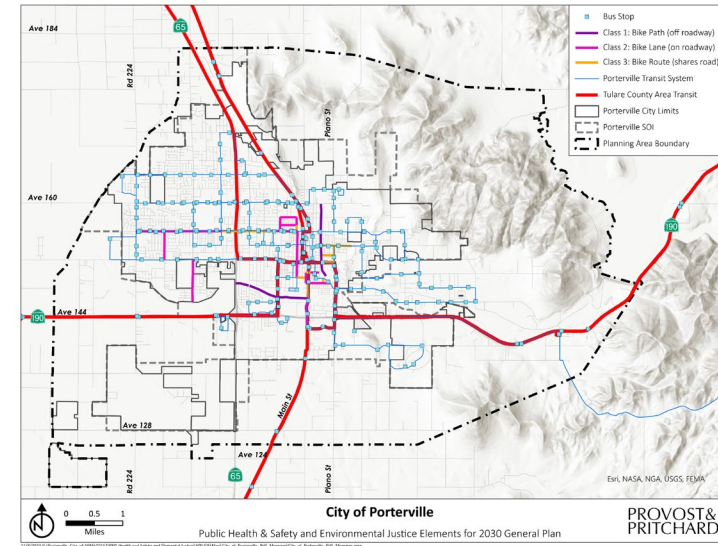
- Toxic substances
- Overcrowding
- Affordability

Factor	Summary	Recommendation
Toxic Substances	There is likely some occurrence of toxic substances, including lead, asbestos, and mold in Porterville’s housing stock, based on its age. When these homes are in a state of disrepair, exposure to these toxic substances tends to increase, also increasing the associated health risks.	Increase awareness of warning signs for presence of toxic substances.
Rodents and Pests	There are no known problems with rodents or pests in the City of Porterville.	No action needed.
Overcrowding	There is some occurrence of overcrowding in Porterville, especially among low-income and renting households.	Encourage construction of affordable housing units and housing that can accommodate larger and multi-generational households.
Affordability	Approximately 43% of households in Porterville are cost-burdened and spending more than 30% of their income on housing.	Increase awareness of and participation in affordable housing programs and programs that assist in off-setting other living costs such as food and transportation. Encourage construction of affordable housing units.

SUMMARY AND RECOMMENDATIONS

Physical Activity

- Prioritize construction of bicycle and pedestrian infrastructure to close network gaps to key locations
- Complete a visual quality assessment of existing bicycle and pedestrian infrastructure



SUMMARY AND RECOMMENDATIONS

Civic Engagement

- Consider meeting time and location to ensure majority of stakeholders can attend
- Provide online meeting access
- Provide childcare and bilingual services when possible
- Provide alternative ways for feedback, such as online forms, email, or phone



Focused General Plan Update

The City of Porterville is updating its Health & Safety element and adopting a new Environmental Justice element to meet recent legislative requirements in California. The Health & Safety element will be updated to address fire risk, flooding, and climate adaptation and resiliency. The Environmental Justice element will address the health risks facing Porterville, including air quality, pollution exposure, and housing access.

LEARN MORE

Project website: porterville2030gp.com

